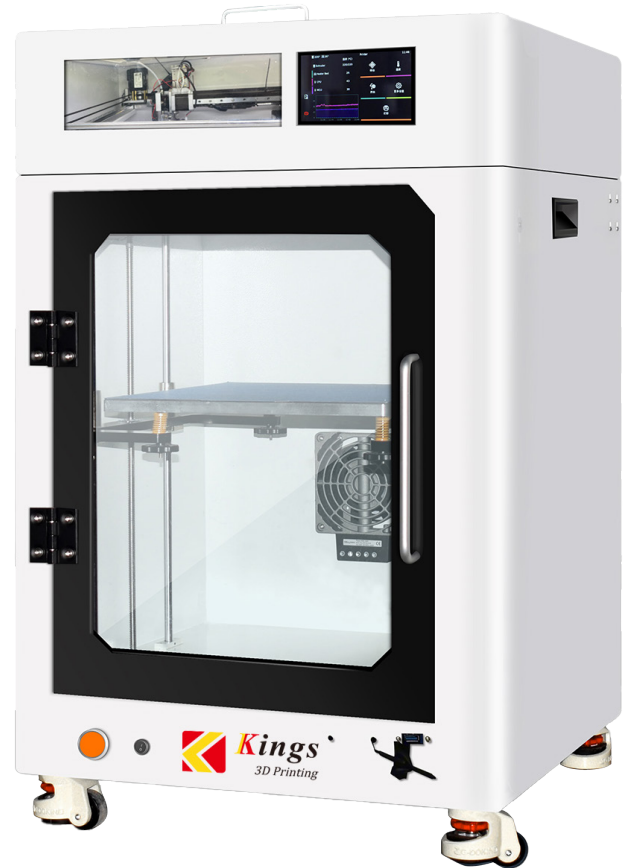


# KINGS FDM 3040

## Kings Industrial FDM 3D Printers

23 Innovative Technologies, High Speed FDM 3D Printing  
Efficient and Cost-Effective Prototyping  
Bring Your Idea into Reality



# KINGS FDM 3040

*Kings*






## ◆ Overview

The Kings FDM 3D Printer 3040 is a reliable and efficient solution designed for precision and versatility. With a printing size of 300 x 300 x 400 mm and machine dimensions of 530 x 520 x 825 mm, it offers a compact yet functional design. This printer is ideal for a range of materials, including PLA (eco-friendly and non-toxic), ABS, and other standard 1.75mm diameter 3D printing filaments. Weighing in at over 48kg, the Kings 3040 is built for stability and durability, making it perfect for a variety of 3D printing projects.

## ◆ Features

- Klipper high-speed system
- 5-inch HD capacitive touchscreen
- Industrial-grade linear guides for XY axis
- Leadshine high-precision servo motors for XY axis (closed-loop drive)
- Dual Z-axis synchronized integrated leadscrews
- BMG dual gears
- 70W high-power heating rod, Volcano nozzle extruder for high-speed printing
- Independent power silicone heated bed, 12mm aluminum, and detachable magnetic steel platform for a flat surface and easy model removal

## ◆ Applications

 Prototyping  Custom Manufacturing  Educational Projects  Art and Design  Architectural Models

# KINGS FDM 3040

*Kings*

## ◆ Technical Data

Build volume	300×300×400mm	Lighting	LED
Machine size	530×520×825mm	Nozzle diameter	0.4/0.6/0.8/1mm
Printing technology	Industrial grade fused deposition modeling	Nozzle temperature	0-320°C
Layer resolution	0.05-0.35mm	Display	5in Touchscreen
Positioning accuracy	xY:0.0011mm,Z:0.00125mm	CPU	32-bit ARM CPU microcontroller
Air purifier	Dual-fan Filtering	Connectivity	SD card,U disk,WiFi and USB
Power loss recovery	Yes	Power supply	AC100v-AC240v 50Hz/60Hz
Filament run-out alarm	Yes	Operation system	Windows,Linux,MAC
Nozzle	1	File format	STL、OBJ
Printing color	Single Color	Appearance	High-temp baking paint sheet metal
Printing speed	30-350mm/s	Admbient temperature	15°C-32°C (60°-90°F)
Structure	Fully enclosed (double door type)	Storage temperature	0°C-32°C (32°-90°F)
Filament supply	Top-down	Net weight	48kg
Movement	XY axis synchronous belt linear guide rail, double Z axis mechanical integrated synchronous screw rod	Printing bed	Independent powered silicone hot bed + aluminum plate +removable magnetic steel plate
Driver	XY axis Lesai closed-loop servo motor unit (42cme08+CL1-507)		



Shenzhen Kings 3D Printing Technology Co.,Ltd.

Email: market@kings3dprinter.com | Mob/Whatsapp: +86 13342965481

Web: www.kings3dprinter.com

📍 Floor 14, Building 3A, Yunzhi Science Park, Guangming District, Shenzhen, Guangdong, CHINA

📍 No.178, Dingxing Road, High-tech Zone, Zhuhai City, Guangdong Province